

# CRETA



Creta modern coffee table base is made of metal with internal wooden faces. The top and base are available in various colors and finishes.

Height including top:

Veneered version 1  
38.5cm

Veneered version 2  
36.2cm

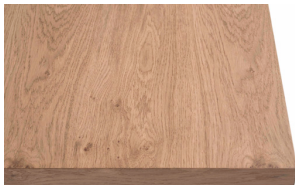
Solid wood + veneered version 5  
38.5cm

Ceramic marble 36.8cm

## TOP

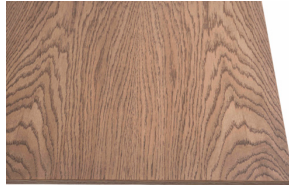
---

1



Veneered Oak, Vintage Oak and American Walnut on Wood Particles E1 th. 40mm. Veneered border.

2



Veneered Oak, Vintage Oak and American Walnut on MDF E1 th. 17mm. Shaped bevelled at 25°.

5



Solid wood border on Wood Particles E1 th. 40mm. Veneered Oak, Vintage Oak. Natural edges. (Only available on 130x80)

6



Ceramic marble th. 6mm reinforced by MDF E1 th. 17mm shaped bevelled at 25°.

7



Ceramic marble th. 6mm reinforced by MDF E1 th. 17mm shaped bevelled at 25°. Curved 4 edges.

## TOP FINISHES

---



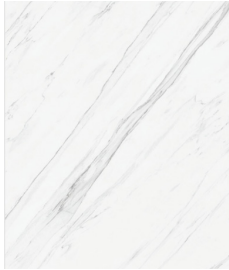
Oak



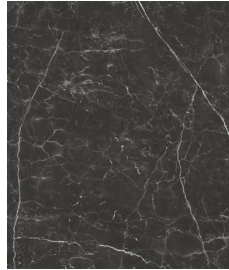
Vintage Oak



American Walnut



Ceramic Marble  
Calacatta



Ceramic Marble  
Nero Marquina

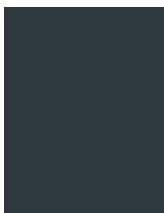
---

## METAL BASE COLORS

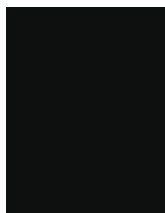
---



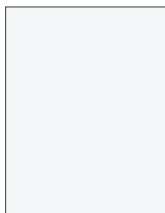
Noir 2100



7016



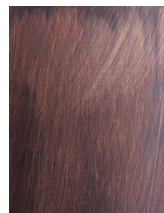
9005



9016



Bronze



Copper

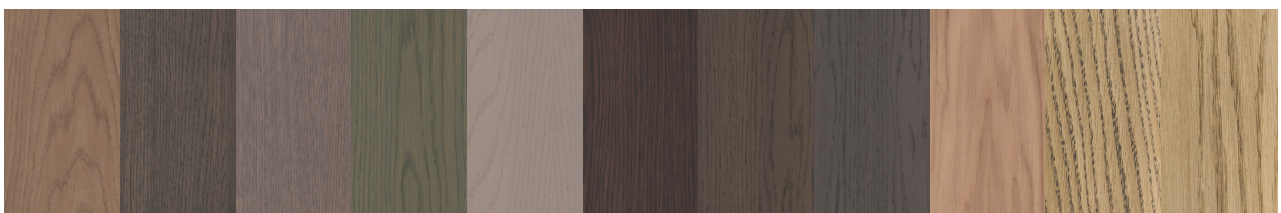


Metal bases are also available in most RAL colors with extra charge

---

## OAK COLORS

---



TB1

TB2

TB3

TB4

TB5

TB6

TB8

TB9

TB10

TB11

TB12